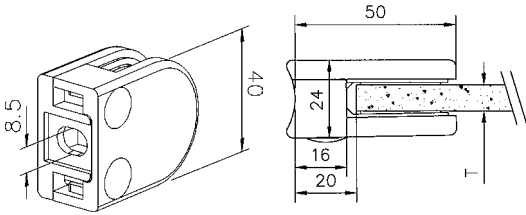


GLASS CLAMP - "D" SHAPE - FLAT POST



CODE	T = GLASS WIDTH	FINISH
AN-1420-00	6mm, 8mm	SATIN



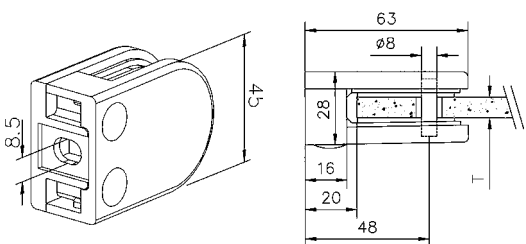
CODE	DESCRIPTION	PER CLAMP
SS-SOCM820	HEX SCREW M8 X 20mm	1



GLASS CLAMP - "D SHAPE" - FLAT POST



CODE	T = GLASS WIDTH	FINISH
AN-1422-00G	6mm, 8mm, 10mm	SATIN



CODE	DESCRIPTION	PER CLAMP
SS-SOCM820	HEX SCREW M8 X 20mm	1

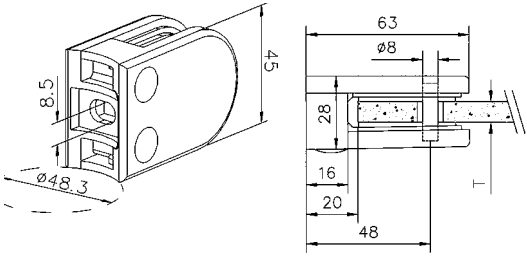


CODE	DESCRIPTION	PER CLAMP
AN-195015022	SECURITY PIN	1

GLASS CLAMP - "D" SHAPE - ROUND POST



CODE	T = GLASS WIDTH (mm)	POST (mm)	FINISH
AN-1422-48G	6mm, 8mm, 10mm	48.3 - 50.8	SATIN



CODE	DESCRIPTION	PER CLAMP
SS-SOCM820	HEX SCREW M8 X 20mm	1



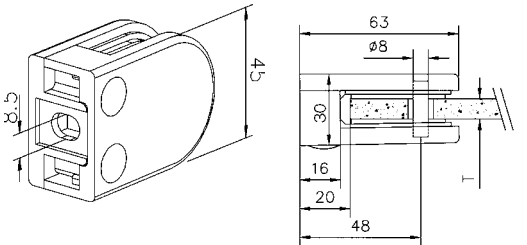
CODE	DESCRIPTION	PER CLAMP
AN-195015022	SECURITY PIN	1

GLASS CLAMP - "D" SHAPE - FLAT POST



CODE	GLASS WIDTH	FINISH
AN-1425-00G *	12mm	SATIN

* DENOTES RUN OUT ITEM



CODE	DESCRIPTION	PER CLAMP
SS-SOCM820	HEX SCREW M8 X 20mm	1



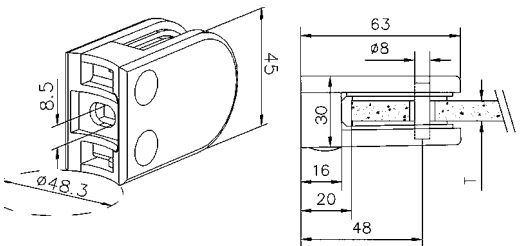
CODE	DESCRIPTION	PER CLAMP
AN-195015025	SECURITY PIN	1

GLASS CLAMP - "D" SHAPE - ROUND POST



CODE	T = GLASS WIDTH (mm)	POST (mm)	FINISH
AN-1425-48G *	12mm	48.3 - 50.8	SATIN

* DENOTES RUN OUT ITEM



CODE	DESCRIPTION	PER CLAMP
SS-SOCM820	HEX SCREW M8 X 20mm	1



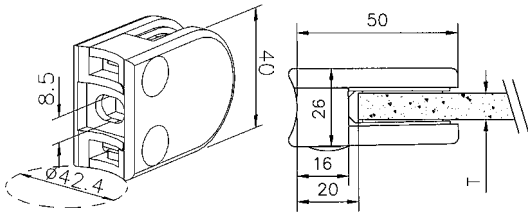
CODE	DESCRIPTION	PER CLAMP
AN-195015025	SECURITY PIN	1

GLASS CLAMP - "D SHAPE" - ROUND POST



CODE	GLASS WIDTH	FINISH
AN-1020-42G *	6mm, 8mm	ZINTEC

* DENOTES RUN OUT ITEM



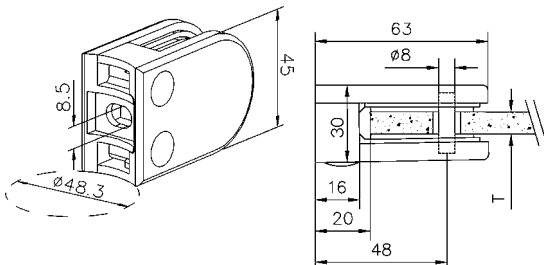
CODE	DESCRIPTION	PER CLAMP
SS-SOCM820	HEX SCREW M8 X 20mm	1

GLASS CLAMP - "D" SHAPE - ROUND POST



CODE	GLASS WIDTH (mm)	POST (mm)	FINISH
AN-1022-48G*	6mm, 8mm, 10mm	48.3 - 50.8	ZINTEC

* DENOTES RUN OUT ITEM

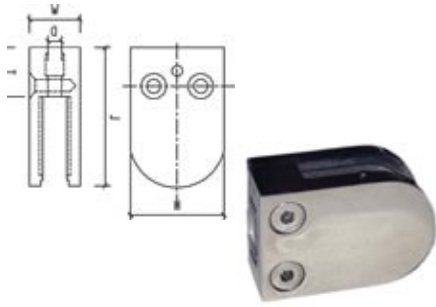


CODE	DESCRIPTION	PER CLAMP
SS-SOCM820	HEX SCREW M8 X 20mm	1



CODE	DESCRIPTION	PER CLAMP
AN-195015022	SECURITY PIN	1



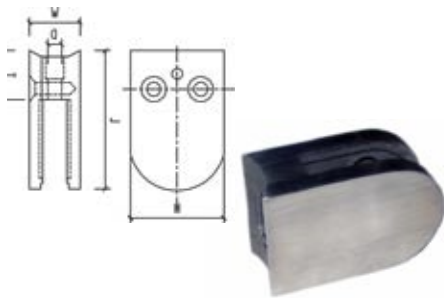


GLASS CLAMP - "D" SHAPE - FLAT POST

CODE	GLASS WIDTH	POST	H mm	L mm	W mm	T mm	D mm	Finish
SR-GCM-00	6, 8, 10mm	FLAT	45	63	26	16	9	MP
SR-GCDL-00	8, 10, 12mm	FLAT	55	60	32	16	9	MP



CODE	DESCRIPTION	PER CLAMP
SS-SOCM820	HEX SCREW M8 X 20mm	1



GLASS CLAMP - "D SHAPE" - ROUND POST

CODE	GLASS WIDTH	POST	H mm	L mm	W mm	T mm	D mm	Finish
SR-GCM-50	6, 8, 10mm	50.8	45	63	26	16	9	MP
SR-GCM-50S	6, 8, 10mm	50.8	45	63	26	16	9	SATIN
SR-GCDL-50	8, 10, 12mm	50.8	55	60	32	16	9	MP



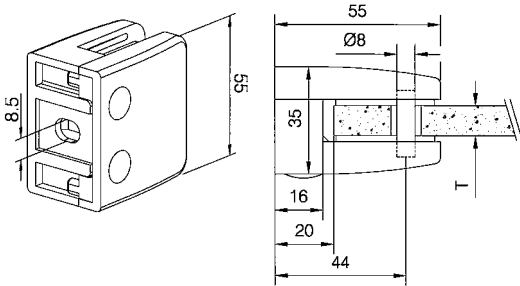
CODE	DESCRIPTION	PER CLAMP
SS-SOCM820	HEX SCREW M8 X 20mm	1



GLASS CLAMP - SQUARE - FLAT POST



CODE	T = GLASS WIDTH	FINISH
AN-1426-00G	8mm, 10mm, 12mm	SATIN



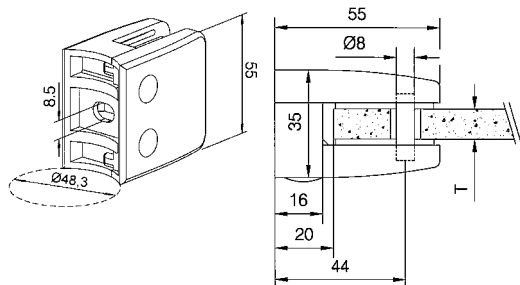
CODE	DESCRIPTION	PER CLAMP
SS-SOCM820	HEX SCREW M8 X 20mm	1



CODE	DESCRIPTION	PER CLAMP
AN-195015025	SECURITY PIN	1

GLASS CLAMP - SQUARE - ROUND POST

CODE	T = GLASS WIDTH	FINISH
AN-1426-48G	8mm, 10mm, 12mm	SATIN



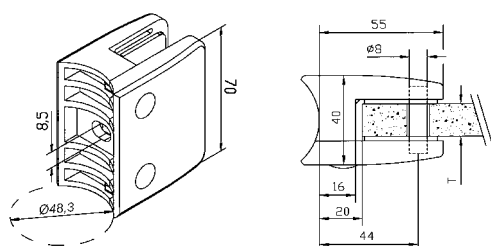
CODE	DESCRIPTION	PER CLAMP
SS-SOCM820	HEX SCREW M8 X 20mm	1



CODE	DESCRIPTION	PER CLAMP
AN-195015025	SECURITY PIN	1

GLASS CLAMP - SQUARE - ROUND POST

CODE	T = GLASS WIDTH (mm)	POST (mm)	FINISH
AN-1424-48	12mm, 16mm	48.3 - 50.8	SATIN



CODE	DESCRIPTION	PER CLAMP
SS-SOCM820	HEX SCREW M8 X 20mm	1



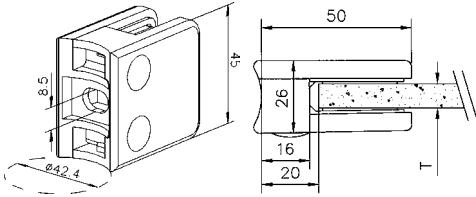
CODE	DESCRIPTION	PER CLAMP
AN-195015030	SECURITY PIN	1

GLASS CLAMP - SQUARE - ROUND POST



CODE	T = GLASS WIDTH	FINISH
AN-1021-42G *	6mm, 8mm, 10mm	ZINTEC

* DENOTES RUN OUT ITEM



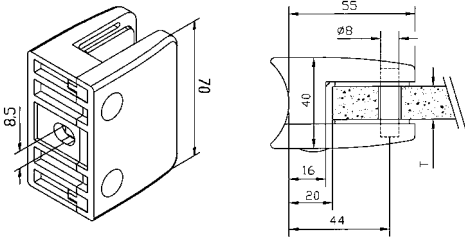
CODE	DESCRIPTION	PER CLAMP
SS-SOCM820	HEX SCREW M8 X 20mm	1

GLASS CLAMP - SQUARE - FLAT POST



CODE	T = GLASS WIDTH	FINISH
AN-1024-00G *	12mm, 16mm	ZINTEC

* DENOTES RUN OUT ITEM



CODE	DESCRIPTION	PER CLAMP
SS-SOCM820	HEX SCREW M8 X 20mm	1



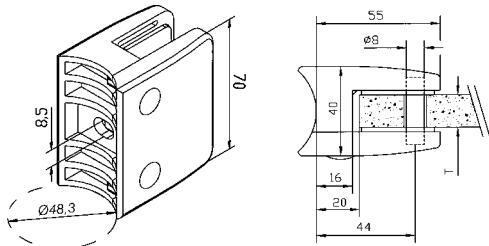
CODE	DESCRIPTION	PER CLAMP
AN-195015030	SECURITY PIN	1

GLASS CLAMP - "D" SHAPE - ROUND POST



CODE	T = GLASS WIDTH (mm)	POST (mm)	FINISH
AN-1024-48 *	12mm, 16mm	48.3 - 50.8	ZINTEC

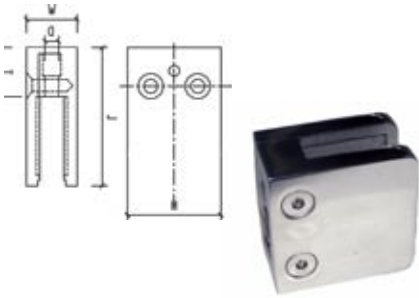
* DENOTES RUN OUT ITEM



CODE	DESCRIPTION	PER CLAMP
SS-SOCM820	HEX SCREW M8 X 20mm	1



CODE	DESCRIPTION	PER CLAMP
AN-195015030	SECURITY PIN	1

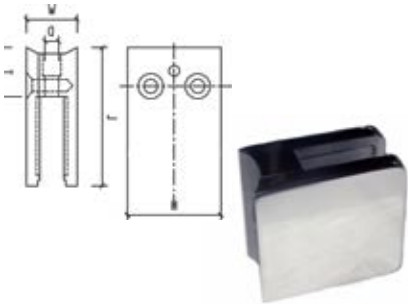


GLASS CLAMP - SQUARE - FLAT POST

CODE	GLASS WIDTH	POST	H mm	L mm	W mm	T mm	D mm	Finish
SR-GCSQ-00	8, 10, 12mm	FLAT	55	55	32	16	9	MP
SR-GCSQ-00S	8, 10, 12mm	FLAT	55	55	32	16	9	SATIN
SR-GCSQ-00SM	6, 8mm	FLAT	45	45	28	16	9	MP



CODE	DESCRIPTION	PER CLAMP
SS-SOCM820	HEX SCREW M8 X 20mm	1



GLASS CLAMP - SQUARE - ROUND POST

CODE	GLASS WIDTH	POST	H mm	L mm	W mm	T mm	D mm	Finish
SR-GCSQ-50	8, 10, 12mm	50.8	55	55	32	16	9	MP
SR-GCSQ-50S	8, 10, 12mm	50.8	55	55	32	16	9	SATIN
SR-GCSQ-50SM	6, 8mm	50.8	45	45	28	16	9	MP



CODE	DESCRIPTION	PER CLAMP
SS-SOCM820	HEX SCREW M8 X 20mm	1



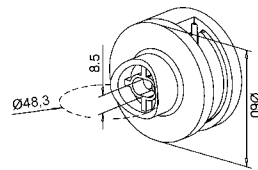
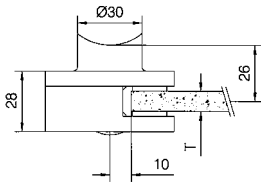
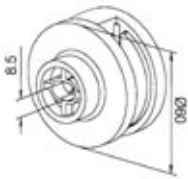
GLASS CLAMP - ROUND - FLAT & ROUND POST



CODE		GLASS WIDTH	FINISH
AN-1440-00	FLAT	8, 10, & 12mm	SATIN
AN-1440-42 *	Ø42	8, 10, & 12mm	SATIN
AN-1440-48	Ø48 - Ø50	8, 10, & 12mm	SATIN



CODE	DESCRIPTION	PER CLAMP
SS-SOCM820	HEX SCREW M8 X 20mm	1



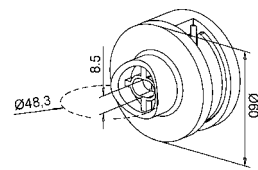
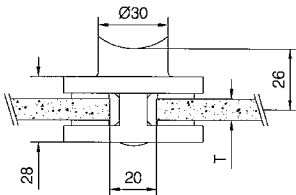
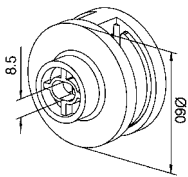
GLASS CLAMP - ROUND - FLAT & ROUND POST



CODE		GLASS WIDTH	FINISH
AN-1441-00	FLAT	8, 10, & 12mm	SATIN
AN-1441-42 *	Ø42	8, 10, & 12mm	SATIN
AN-1441-48	Ø48 - Ø50	8, 10, & 12mm	SATIN



CODE	DESCRIPTION	PER CLAMP
SS-SOCM820	HEX SCREW M8 X 20mm	1



GLASS CLAMP GASKETS

www.bridco.com.au



The glass clamps in this catalogue require rubber gaskets to ensure the glass can be secured safely.

The tables below are a guide to rubber gaskets, glass clamps & glass diameter.



CODE	FOR GLASS CLAMP	GLASS DIA	PER CLAMP
AN-1420R-06	AN-1420-00	6mm	2
AN-1420R-08	AN-1420-00	8mm	2
AN-1422R-06	AN-1422-00G / AN-1422-48G	6mm	2
AN-1422R-08G	AN-1422-00G / AN-1422-48G	8mm	2
AN-1422R-10G	AN-1422-00G / AN-1422-48G	10mm	2
AN-1425R-12G	AN-1425-00G / AN-1425-48G	12mm	2



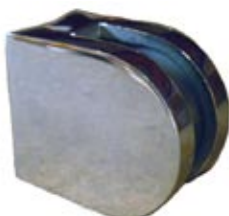
CODE	FOR GLASS CLAMP	GLASS DIA	PER CLAMP
AN-1426R-08	AN-1426-00G / AN-1426-48G	8mm	2
AN-1426R-10G	AN-1426-00G / AN-1426-48G	10mm	2
AN-1426R-12G	AN-1426-00G / AN-1426-48G	12mm	2
AN-1424R-16	AN-1424-48	16mm	2



CODE	FOR GLASS CLAMP	GLASS DIA	PER CLAMP
AN-1440R-08	AN-1440-00/42/48 AN-1441-00G/42/48G	8mm	2 4
AN-1440R-10	AN-1440-00/42/48 AN-1441-00G/42/48G	10mm	2 4
AN-1440R-12G	AN-1440-00/42/48 AN-1441-00G/42/48G	12mm	2 4



CODE	FOR GLASS CLAMP	GLASS DIA	PER CLAMP
SR-GCSQR-08	SR-GCSQ-00/50/00S/50S	8mm	2
SR-GCSQR-10	SR-GCSQ-00/50/00S/50S	10mm	2
SR-GCSQR-12	SR-GCSQ-00/50/00S/50S	12mm	2
SR-GCSQRS-06	SR-GCSQ-00SM/50SM	6mm	2
SR-GCSQR-08	SR-GCSQ-00SM/50SM	8mm	2



CODE	FOR GLASS CLAMP	GLASS DIA	PER CLAMP
SR-GCMR-06	SR-GCM-00/50/50S	6mm	2
SR-GCMR-08	SR-GCM-00/50/50S	8mm	2
SR-GCMR-10	SR-GCM-00/50/50S	10mm	2
SR-GCMR-12	SR-GCDL-00/50	12mm	2

GLASS CLAMP RUNOUT LINES

The components listed below will be discontinued due to low demand, once stock is depleted. These components are not featured in this catalogue but have been a part of previous publications of the 'Bridco Modular Handrail Catalogue'.

CODE	DESCRIPTION	CODE	DESCRIPTION
AN-1421-00G	SQUARE GLASS CLAMP / FLAT POST	AN-1427-00	"D" SHAPED MINI GLASS CLAMP
AN-1421-42	SQUARE GLASS CLAMP / ROUND POST	AN-1427R-06	6mm GASKET
AN-1421R-06	6mm GASKET	AN-1427R-08	8mm GASKET
AN-1421R-08	8mm GASKET	AN-1424R-12	12mm GASKET
AN-1421R-10	10mm GASKET	AN-1422R-08Z	8mm GASKET
AN-1026-00G	ZINTEC SQUARE CLAMP / FLAT POST	AN-1424R-12	12mm GASKET
AN-1426R-08	8mm GASKET	AN-1426R-12G	12mm GASKET
AN-1426R-10G	10mm GASKET		

POOL GATE ACCESSORIES

As a part of our Modular Handrail Systems range, Bridco have stainless steel pool gate hinges and locks.

POOL GATE HINGES



CODE	DESCRIPTION
SS-HINGE	STAINLESS STEEL GATE HINGE (pair)
SS-HINGE/SQ	STAINLESS STEEL HINGE TO SUIT SQUARE POST (pair)

POOL GATE LOCKS



CODE	DESCRIPTION
SS-LOCK	POOL GATE LOCK
SS-PGL 180	POOL GATE LOCK / GLASS FRICTION (slim line)
SS-PGL CORNER	POOL GATE LOCK / 90 deg CORNER LATCH (slim line)
SS-PGL ROUND	POOL GATE LOCK TO SUIT 50mm ROUND POST (slim line)
SS-PGL - SQUARE	POOL GATE LOCK TO SUIT SQUARE POST (slim line)