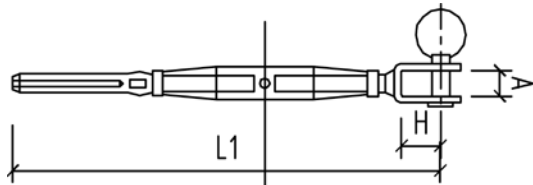


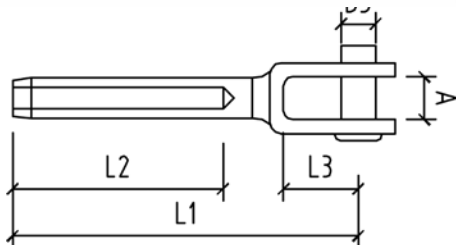
BRIDCO HAVE A RANGE OF SPECIALISED FITTINGS, COMMONLY USED IN HEIGHT SAFETY INDUSTRIES

Rigging screws and fork terminals to suit 8mm (5/16") wire rope.



BOTTLESCREW JAW AND SWAGE STUD

CODE	A	H	L1	L2	B
STANDARD					
SS-312T-128	15	28	220	300	16.2
BATTERY SWAGE STYLE					
SS-312T-128SL	15	28	241	321	12.5



FORK TERMINAL

CODE	A	D3	L1	L2	L3
STANDARD					
SS-7803-0812	14.5	12	146	81	28
BATTERY SWAGE STYLE					
SS-7803-08SL	14.5	12	150	81	28

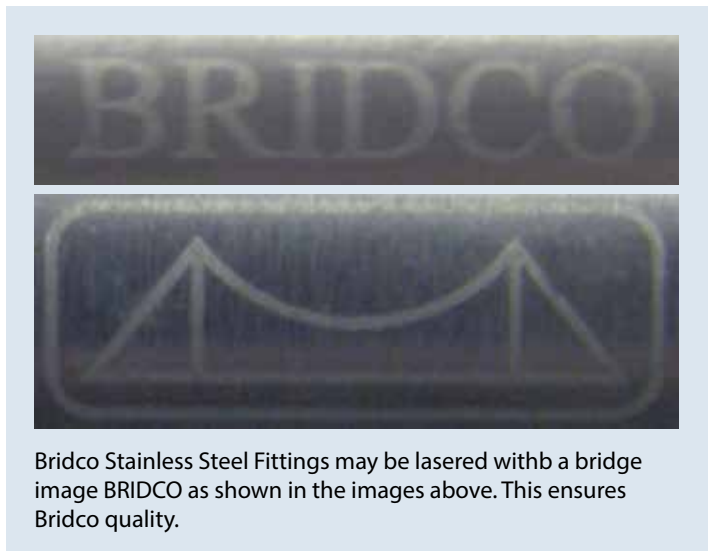
### Standard

Standard Bridco M12 rigging screws with swage terminal and fork terminal to suit 8mm wire rope, (requires standard 8mm die). These items are batch tested and Test Certificates are available on request.

### Battery Swage style

Bridco M12 rigging screw with swage terminal to suit 8mm wire rope, but can be pressed with special battery swagers. (Can use hex 6 or 6mm roll die). Due to the nature of battery terminal swages, Test Certificates are not available for this method.

When pressed correctly the above fittings exceed the breaking strain of 8mm, 1x19 stainless steel wire rope.



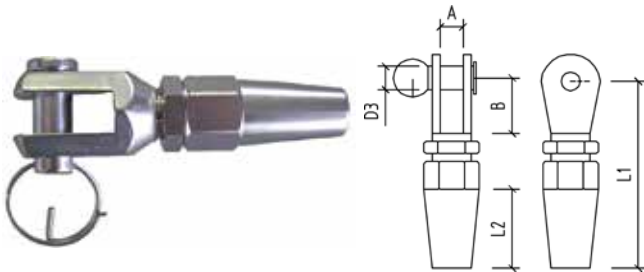
Bridco Stainless Steel Fittings may be lasered with a bridge image BRIDCO as shown in the images above. This ensures Bridco quality.

## RIGGING SCREWS AND FORK TERMINALS TO SUIT 8MM (5/16") WIRE ROPE



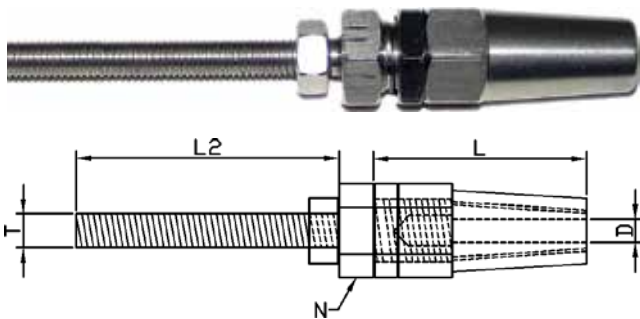
BRIDCO BOTTLESCREW JAW-SWAGELESS

CODE	A	H	L1 MIN	L2 MAX
SS-8014-128	15	28	270	35



BRIDCO BOTTLESCREW FORK TERMINAL

CODE	D3	L1	L2	B	A
SS-8012-08	14	105	40	35	13.7



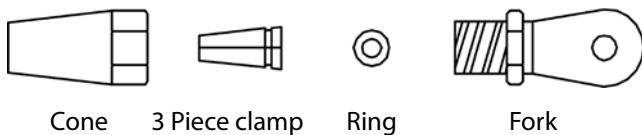
BRIDCO SWAGELESS TERMINAL

CODE	WIRE	D	T	L	L2	N
SS-7812-08	5/16"	8	12	60	80	24
SS-7812-08L	5/16"	8	12	60	80	24

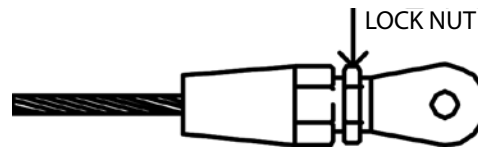
L = LEFT HAND THREAD

### BRIDCO SWAGES

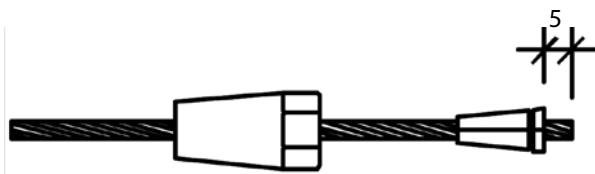
For use with 8mm 7x7, 7x19 or 1x19 construction.



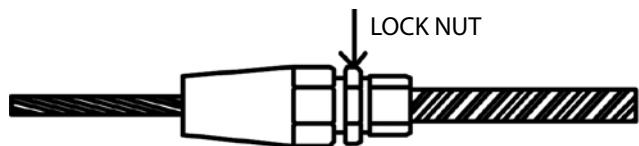
Cone    3 Piece clamp    Ring    Fork



3. Screw lock nut to secure assembly.



1. Feed wire through cone and spread 3 piece clamp around wire, leaving 5mm of excess.



2. Push 3 piece clamp into cone and slide the ring over the excess wire. Screw the head on firmly with spanners to hold assembly together.

4. Repeat process for threaded part in Bottlescrew.

To determine the length to cut the wire, first measure the bearing point to bearing point dimension, this will be the distance between the 2 fixings on the posts shown above.

Bearing point to bearing point measurement (-) 215mm = Wire cut length.

Measurements are with bottlescrew in half open position.

Load capacity outweighs wire breaking strengths provided the setup is assembled correctly. Fittings suitable for balustrade only, not suitable for yacht rigging.

No responsibility is taken for misuse or poorly assembled systems.

